

Cognitive Science

BComp (Hons) *COGS-P-BCH*

51 core units
45 option units
24 elective units

SSP

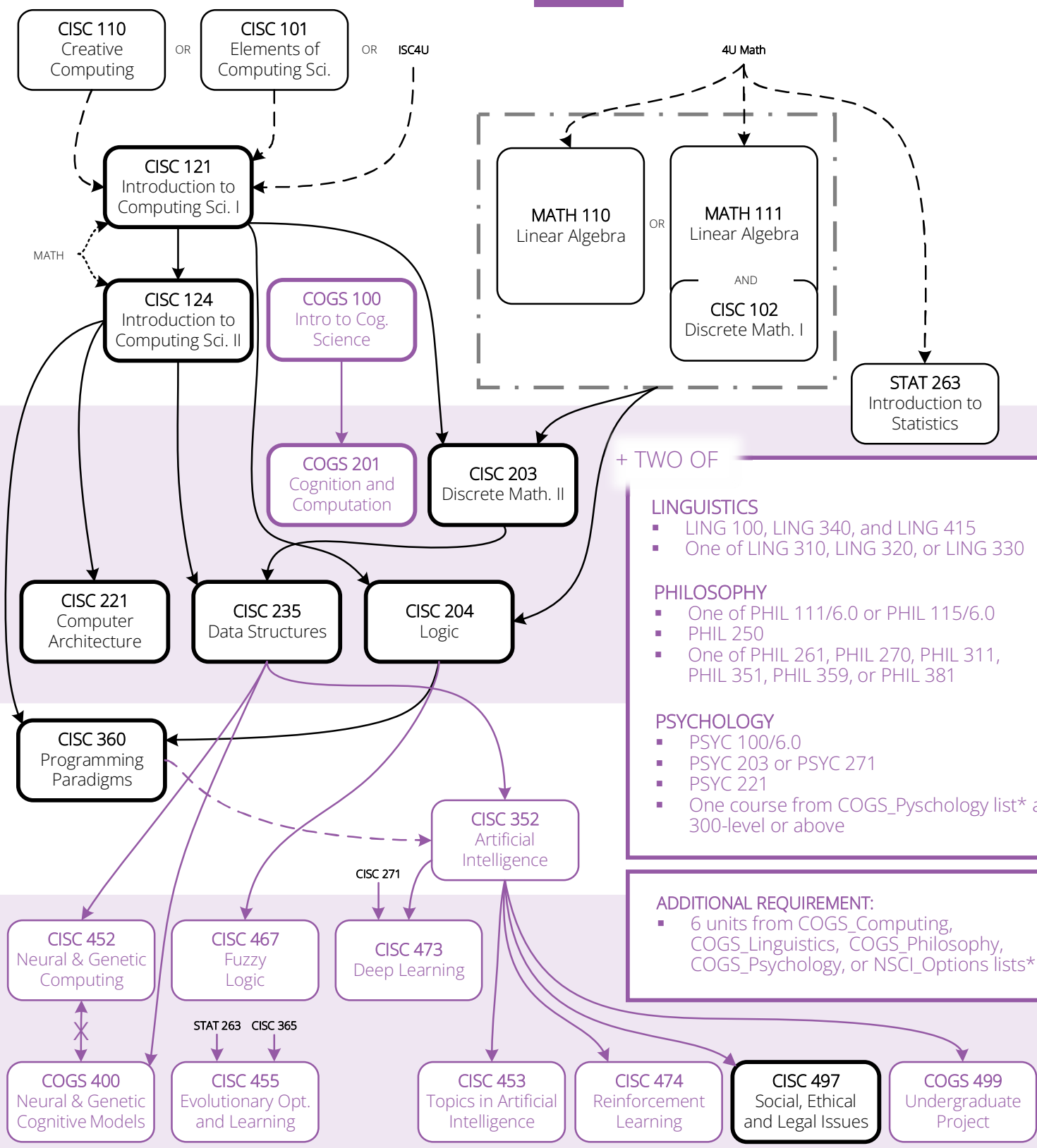
120 units total

YEAR 1

YEAR 2

YEAR 3

YEAR 4



+ TWO OF

- LINGUISTICS**
- LING 100, LING 340, and LING 415
 - One of LING 310, LING 320, or LING 330
- PHILOSOPHY**
- One of PHIL 111/6.0 or PHIL 115/6.0
 - PHIL 250
 - One of PHIL 261, PHIL 270, PHIL 311, PHIL 351, PHIL 359, or PHIL 381
- PSYCHOLOGY**
- PSYC 100/6.0
 - PSYC 203 or PSYC 271
 - PSYC 221
 - One course from COGS_Psychology list* at 300-level or above

- ADDITIONAL REQUIREMENT:**
- 6 units from COGS_Computing, COGS_Linguistics, COGS_Philosophy, COGS_Psychology, or NSCI_Options lists*

*See academic calendar for option lists.

