

## Fundamental Computation

BComp (Hons) COMP-M-BCH\*

42 core units

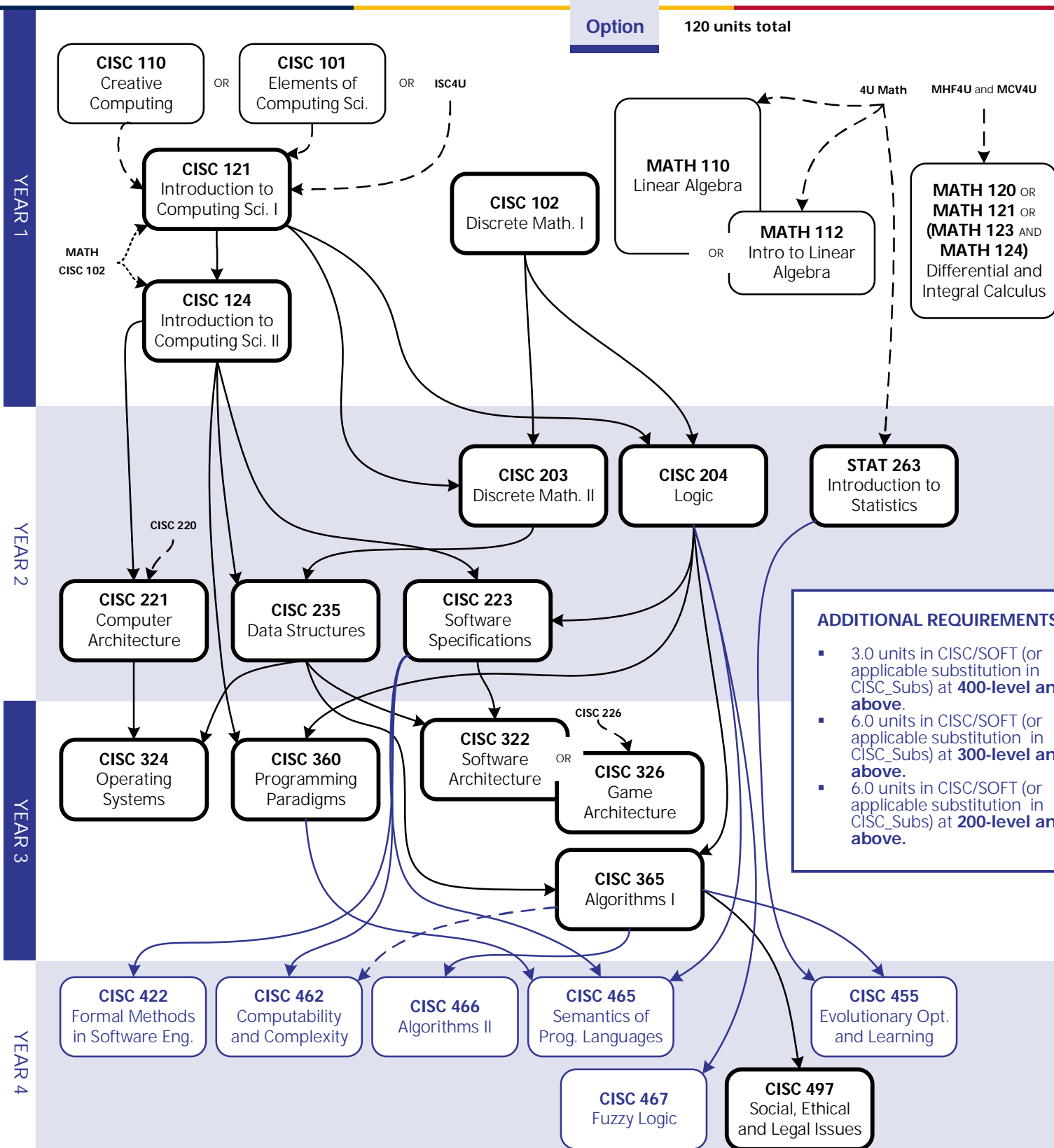
18 option units

9 supporting units

51 elective units\*

### Option

120 units total



\*Fundamental Computation may also be taken as a sub-plan of the Computer Science Specialization (CSCI-P-BCH) with additional 30-unit breadth requirement but fewer electives and no Minor (see calendar for details).

REQUIRED  CHOICE   
 PREREQUISITE  COREQUISITE  RECOMMENDED 